

507 Simpson St.
Greensboro, NC 27401

View looking Southwest



View looking Northwest

Commercial Real Estate - Brokerage - Consulting - Development

Information furnished regarding the aforementioned property was from sources deemed reliable. No warranties or guarantees are expressed or implied as to the accuracy thereof



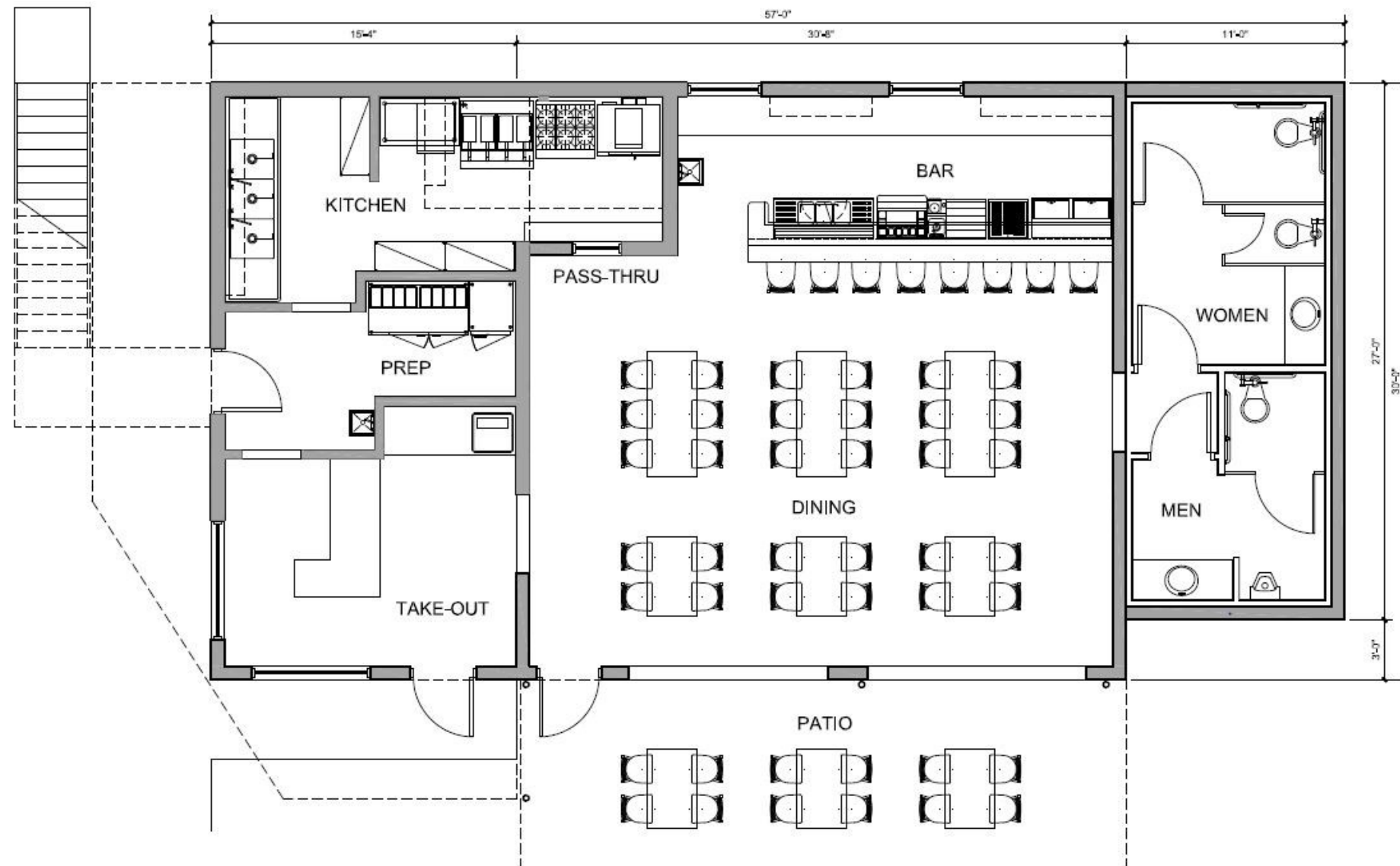
507 Simpson St.

Greensboro, NC 27401

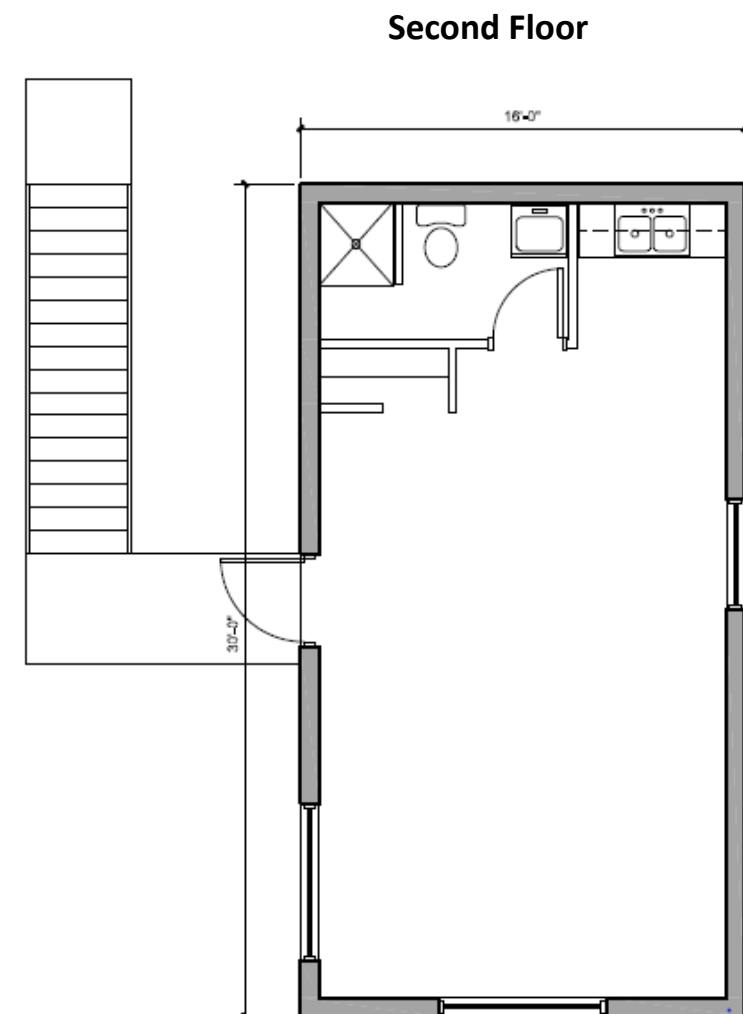
- Prime Location in North Downtown Restaurant/Bar District (LOWFI)
- +/- 1,677 sf (first floor) +/- 480 sf (second floor) = 2,157 sf rentable
- Proposed parking as detailed on page three
- Landlord to build out shell to suit tenant

View looking Southwest

Call for Pricing



PROPOSED GROUND FLOOR PLAN
3/16" = 1'-0" 507 SIMPSON ST. 2020.10.08



Second Floor

Jeff Yetter, CCIM, LEED AP

336-497-1444

515-C South Elm St

Greensboro, NC 27406

brokeryetter@gmail.com



Commercial Real Estate - Brokerage - Consulting - Development

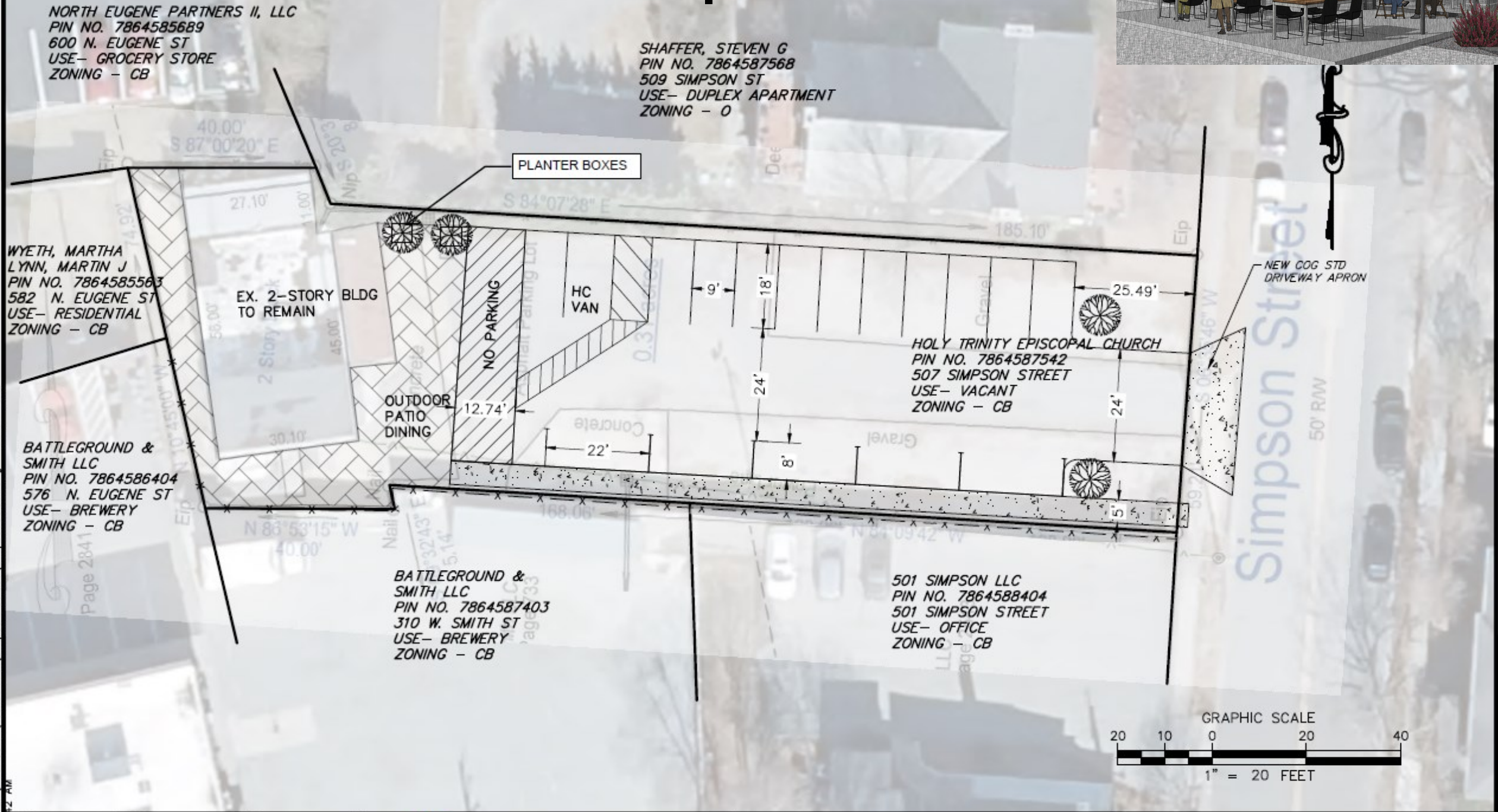
Information furnished regarding the aforementioned property was from sources deemed reliable. No warranties or guarantees are expressed or implied as to the accuracy thereof

507 Simpson St.

View looking Southwest



Concept Plan



Jeff Yetter, CCIM, LEED AP

336-497-1444

515-C South Elm St

Greensboro, NC 27406

brokeryetter@gmail.com



DAVIS • MARTIN • POWELL
ENGINEERS & SURVEYORS
6415 OLD PLANK RD, HIGH POINT, NC 27265
(336) 886-4821 | WWW.DMP-INC.COM | LICENSE: F-0245



CONCEPT SITE PLAN
507 SIMPSON STREET REDEVELOPMENT
GREENSBORO, NORTH CAROLINA